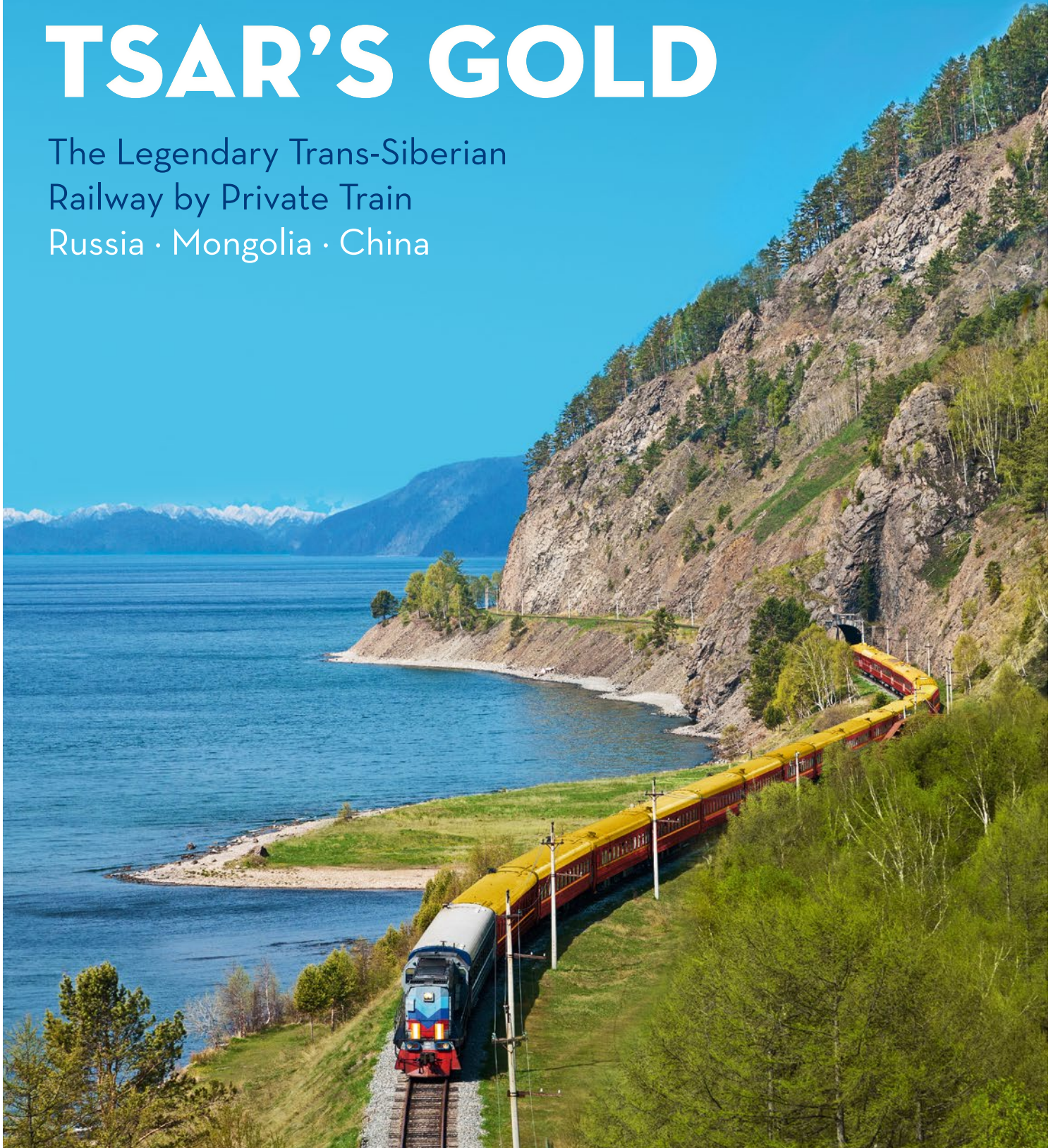




TSAR'S GOLD

The Legendary Trans-Siberian
Railway by Private Train
Russia · Mongolia · China





THE PHILOSOPHY BEHIND OUR JOURNEYS

As Europe's most creative organiser of train journeys and charter cruises, we are your specialist for extraordinary trips to fascinating places.

Relying on the experience of 30 years, we have made unusual travel itineraries an art form. All our travel arrangements allow discovering unknown corners or rediscovering classic destinations around the entire globe.

Our trains and cruises offer the most comfortable way of travelling distant countries. Exciting excursions guarantee authentic encounters, entertaining talks enhance your travel experience and culinary specialities whet your appetite for the distinctive flavours of exotic cultures.



THE TRANS-SIBERIAN BY PRIVATE TRAIN

Experience one of the last great travel adventures! A journey on the Trans-Siberian Railway, one of the world's most fascinating and safest train routes, is even more interesting, comfortable and entertaining with our private train. This grand journey is the chance to fulfil the dream of a lifetime.

The historic section between Moscow, Lake Baikal and Beijing is the heart of all our travel routes: the exciting days of your journey deliver the highlights of three fascinating countries directly to your compartment. Lean back to enjoy dramatic changes of scenery and savour a choice of Europe's and Asia's most superb and splendid landscapes.

An experienced multi-lingual tour director accompanies your trip, and, just in case, there is even a doctor on board. A sophisticated on-board programme complements a comprehensive excursion and sightseeing package to make your journey truly memorable. Take advantage of the extensive array of services offered by Europe's most experienced travel organiser on this route.



ITINERARY BEIJING – MOSCOW

DAY 1. BEIJING Meeting tour guide at Beijing airport. Transfer, hotel check-in, city tour and welcome dinner. Overnight: Capital Hotel (or similar). Meals included: dinner (D).

DAY 2. BEIJING Great Wall, Ming Tombs and Spirit Way followed by speciality dinner: Peking Duck. Overnight: Capital Hotel (or similar). Meals included: breakfast (B), lunch (L), dinner (D).

DAY 3. BEIJING—DEPARTURE FOR MONGOLIA Forbidden City. Boarding Chinese train in the evening. Overnight on board. (BLD)

DAY 4. CROSSING THE GOBI DESERT Arrival at Mongolian border around noon. Change to Tsar's Gold private train. Overnight on board. (BLD)

DAY 5. ULAN BATOR City tour with Chojjin Lama Temple. Optional: visit of traditional Mongolian folklore presentation. Overnight: Ramada (or similar) in Ulan Bator. Upon request: overnight in a yurt in the Mongolian Alps. (BLD)

DAY 6. ULAN BATOR Gandan Monastery and Mongolian Alps including visit to yurt camp and demonstrations of horse-riding and traditional wrestling. Overnight on board. (BLD)

DAY 7. ULAN UDE Train ride through Selenga Valley. City tour of Ulan Ude. Overnight on board. (BLD)

DAY 8. LAKE BAIKAL Arrival at Lake Baikal. Ride on the panorama route along the shores. Boat ride on the lake and visit of a picturesque Baikal village. Barbecue on lakeshore (weather permitting). Overnight on board. (BLD)

DAY 9. IRKUTSK City tour of Irkutsk and visit to open-air museum with focus on daily life in historical Siberia. Overnight: Courtyard by Marriott (or similar). (BLD)

DAY 10. TRANS-SIBERIA Train ride through Siberia's diverse landscapes. Vodka tasting with traditional Russian snacks. Overnight on board. (BLD)

DAY 11. NOVOSIBIRSK Sightseeing tour and traditional welcoming with bread and salt. Overnight on board. (BLD)

DAY 12. YEKATERINBURG City tour including Cathedral of the Saviour on the Spilled Blood. Overnight on board. (BLD)

DAY 13. KAZAN City tour and visit to Kazan's Kremlin. Overnight on board. (BLD)

DAY 14. MOSCOW Sightseeing, including Kremlin grounds and Red Square. Nocturnal city lights tour. Overnight: InterContinental Tverskaya (or similar). (BLD)

DAY 15. MOSCOW Highlights of Moscow including Lomonossov University and St. Basil's Cathedral. Transfer to the airport. (B)

ITINERARY MOSCOW – BEIJING

DAY 1. Moscow (D) **DAY 2.** Moscow (BLD) **DAY 3.** Kazan (BLD) **DAY 4.** Yekaterinburg (BLD) **DAY 5.** Novosibirsk (BLD) **DAY 6.** Trans-Siberia (BLD) **DAY 7.** Irkutsk (BLD) **DAY 8.** Lake Baikal (BLD) **DAY 9.** Ulan Ude (BLD) **DAY 10.** Ulan Bator (BLD) **DAY 11.** Ulan Bator (BLD) **DAY 12.** Crossing the Gobi Desert (BLD) **DAY 13.** Beijing (BL) **DAY 14.** Beijing (BL) **DAY 15.** Beijing (BLD) **DAY 16.** Beijing (B)

Highlights are the same as of reverse direction.





CLASSIC HIGHLIGHTS

- Beijing's Forbidden City, Tiananmen Square, Temple of Heaven and the Great Wall
- Cities of Ulan Bator, Ulan Ude, Irkutsk, Novosibirsk, Yekaterinburg and Kazan
- Moscow, Russia's proud capital, complete with Kremlin grounds, Red Square and its most renowned icons and cathedrals

OUR UNIQUE HIGHLIGHTS

- Train ride on the ancient section of the Trans-Siberian Railway along Lake Baikal with photo stops
- One day at Lake Baikal with boat ride and barbecue on the lakeshore (weather permitting)
- Traditional mini-Naadam celebration including Mongolian horse-riding show, archery demonstration and wrestling match in Terelj National Park
- Open-air museum in Irkutsk

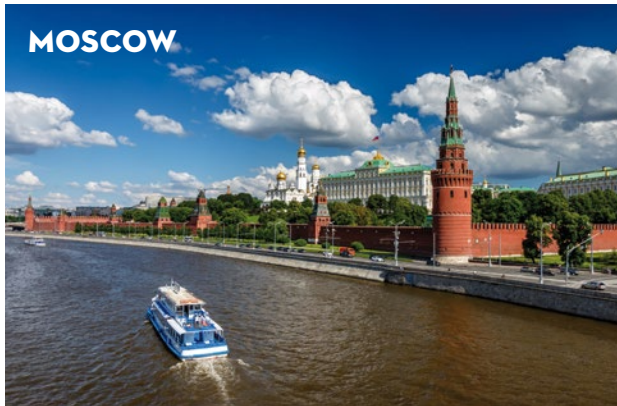
YOUR ADVANTAGES

- Six different compartment categories to choose from, catering to every need and budget
- Three-fold tour guide system, guaranteeing a comfortable and secure journey
- Entertaining and informative: daily lectures about countries, people and cultures
- Culinary highlights: tasting of regional delicacies, all freshly prepared by our chefs on board
- Alternating hotel nights and overnights in train compartment—large luggage can safely be left on board
- Luggage service at train stations
- Doctor on board
- Detailed travel documents, travel guides and personal log book

HOTELS EN ROUTE

City	Overnights · Hotel*	Rating
Beijing	2/3 · Capital Hotel	••••
Ulan Bator	1 · Ramada	••••
Irkutsk	1 · Courtyard by Marriott	••••
Moscow	1 · InterContinental Tverskaya	•••••

* These hotels are examples. Other hotels of equal standard could be used.



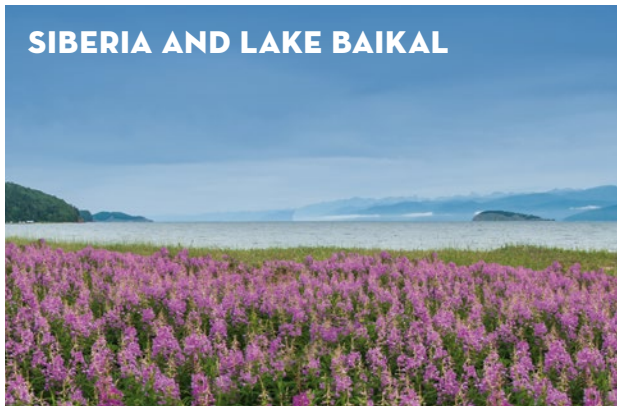
MOSCOW

Europe's largest metropolis offers a splendid variety of cultural sights, such as the Kremlin, the Red Square, St. Basil's Cathedral, Lomonosov University, the reconstructed Cathedral of Christ the Saviour, the former KGB headquarters and the White House, all of which are part of your excursion programme.



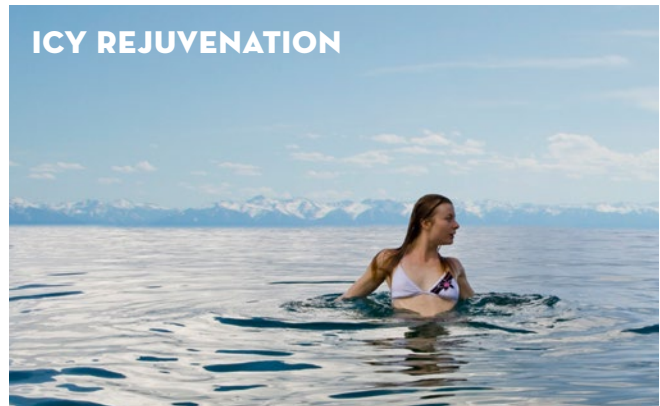
YEKATERINBURG

Feel the breath of history and stand right where the last Tsar and his family were shot by the Bolsheviks in 1918. Today, the Cathedral on the Blood is a monumental reminder of their tragic fate.



SIBERIA AND LAKE BAIKAL

Russia's most remarkable natural phenomenon is also the world's largest reservoir of freshwater. The breath-taking train ride along the shore of Lake Baikal and a barbecue in these incredibly beautiful surroundings are memories to keep forever.



ICY REJUVENATION

Did you ever swim at a temperature of 4° C/40° F? Take a chance and plunge into Lake Baikal's refreshing waters—legend has it that those who take a bath here will be shedding off about 10 years of age. If you do not happen to like cold water, we offer an alternative way of turning back time: fulfil your childhood dream and ride on the engine of the Trans-Siberian!



MONGOLIAN ALPS

Not far from the bustle of the Mongolian capital, peace and harmony are to be found in the **majestic scenery of the Mongolian Alps** with their bizarre rock formations and infinite pastures. For nature lovers we offer the unique opportunity to spend the night under the clearest of skies in the comfort of a traditional nomadic yurt.



BEIJING

Beijing is more than just the Forbidden City and Tiananmen Square: the Bird's Nest (the Olympic Stadium) and the futuristic skyscrapers show the contemporary face of the Chinese capital, whereas a multitude of cultural heritage sites like the Great Wall, the Ming Tombs and the Spirit Way can be found in the city's metropolitan area. And, of course, there is no way around dining on the famous Peking Duck in its native town.



THE WIDEST SELECTION OF TRANS-SIBERIAN TOURS AVAILABLE ANYWHERE

A broad range of routes as well as flexible options and multiple destinations allow you to tailor your own journey through China and Mongolia to your particular interests and to explore the manifold regions along the legendary Trans-Siberian Railway.



FROM MONGOLIA TO MOSCOW

12 days: Start your journey in the Mongolian capital of Ulan Bator and go on an excursion into the beautiful Mongolian Alps. Then board the Tsar's Gold private train to travel via the Russian city of Ulan Ude and on to Lake Baikal, the largest reservoir of freshwater in the world. Afterwards your private train sets off across the tsardom's vast Siberian reaches towards Moscow.



WINTER MAGIC ON THE TRANS-SIBERIAN RAILWAY

13 days: Your fairy tale journey from Moscow to Ulan Bator passes through the vastness of Siberia and its magical winter landscapes. Enjoy a ride with a horse-drawn troika sleigh, the morning light reflecting off the frost in the taiga birch woods, the crisp, clear winter sun and the stunning Lake Baikal or—to put it short—travelling through winter wonderland in a perfectly heated train.



FROM MOSCOW TO VLADIVOSTOK

17 days: Experience the 100-year old historical route of the Trans-Siberian! After travelling from Moscow to Lake Baikal and on to Ulan Ude by private train, you continue to Vladivostok and cover the entire length of this legendary railway. From Ulan Ude you travel by regular train for three days, with visits to a family, to the largest Buddhist monastery in Russia, and to the city of Khabarovsk on the Amur River.



TRANS-SIBERIAN ADVENTURE PLUS TOUR TO ST. PETERSBURG

19/20 days: Lovers of arts and architecture can combine their journey on the Trans-Siberian with a pre- or post-tour to St. Petersburg to get an even better insight into the Russian soul. Experience the beautiful Venice of the North with its world-famous highlights such as Newski Prospekt, Hermitage Museum and the legendary Amber Room.



YOUR TSAR'S GOLD PRIVATE TRAIN

Your Tsar's Gold private train makes it easy to travel the world's most fascinating railway safely and comfortably. Benefit from our 30 years of experience on the Trans-Siberian, with over 750 successful tours.

Culinary enjoyment is provided for by the train's much-praised restaurants offering local specialities. After dinner, the restaurant car with its bar service is an ideal place to enjoy a drink marvelling at the vast Russian and Mongolian scenery or socialising with your fellow travellers.



YOUR COMFORTABLE HOME ON AN UNFORGETTABLE JOURNEY

The original Trans-Siberian private train travels between Moscow and the Chinese border (Erlian), with six different compartment types to choose from, ranging from the Standard Category and the popular Classic and Superior Categories to the stylish Nostalgic Comfort Category and the premium Bolshoi and Bolshoi Platinum Categories featuring private lavatories with WCs and showers.



OUR EXPERTISE

More than 30,000 satisfied guests have travelled with us on over 750 successful tours. The know-how from 30 years of operating trains on the Trans-Siberian makes us Europe's most experienced tour operator on the legendary route.



LIFE ON BOARD

The Tsar's Gold private train is your comfortable home on an unforgettable journey. Our attentive staff provides professional service, mouth-watering meals and bar service are offered in the restaurant cars. There is even a doctor on call 24/7.



YOUR COMPARTMENTS

The Tsar's Gold private train offers the biggest choice of compartments available on the Trans-Siberian. Choose from six different categories according to your personal requirements. All of these compartments are a lot larger than those in an average European sleeping car.



INFOTAINMENT

Our sophisticated onboard programme and the comprehensive sightseeing package provide profound insights into the countries and cities on your route. Enjoy entertaining lectures on board including a Vodka tasting session with traditional toasts and customs, a Russian tea ceremony and a short introduction to the Russian language and the Cyrillic alphabet.



STANDARD

Standard compartments offer space for four passengers. On both sides there are upper and lower berths measuring ca. 26.7 x 73.6 in. (68 x 187 cm), with a table in the middle below the window. Each car has nine compartments, with combined washing and toilet facilities at both ends. For a surcharge, an occupation with only 3 guests is available.



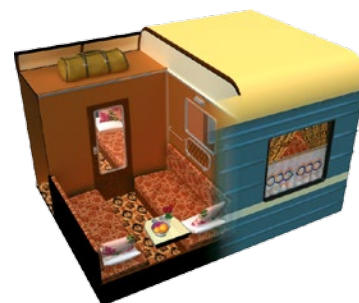
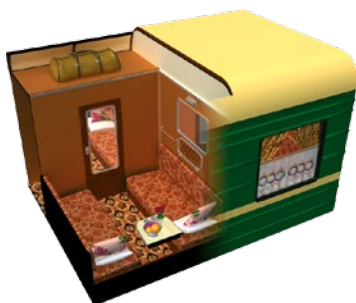
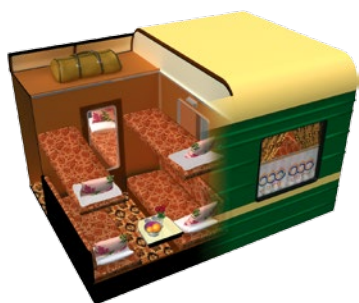
CLASSIC

Compartments in the Classic Category offer considerably more space as they are shared by only two guests, with two lower beds measuring ca. 26.7 x 73.6 in. (68 x 187 cm), one on each side of the compartment. There are nine compartments per car, with combined toilet and washing facilities at both ends. Depending on the train configuration, a shower facility is mostly shared by guests from two to four sleeping cars.



SUPERIOR

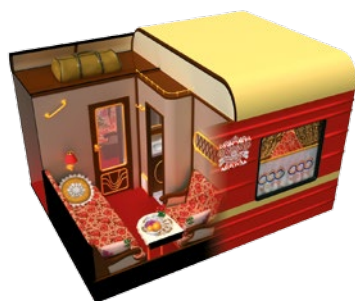
This newly refurbished category now features interior design in a nostalgic look. The compartments have two lower beds, one on each side, measuring ca. 26.7 x 72.8 in. (68 cm x 185 cm). The nine compartments per wagon share two combined washing and toilet facilities located at its ends. Depending on the train configuration, a shower facility is shared by guests from one to three sleeping cars.





NOSTALGIC COMFORT

This category offers the opportunity to truly travel in the style of the red tsars, in a nostalgic ambience that would even make past Soviet leaders feel at home—but with the 21st century's modern amenities. Each of these rolling hotel rooms offers not only two comfortable beds measuring ca. 31.5 x 72.8 in. (80 x 185 cm), placed one above the other, but also an armchair to enjoy the passing landscape in comfort. Two neighbouring compartments share a semi-private lavatory with washing basin and simple shower located between them. Combined washing and toilet facilities are located at both ends of the cars.



BOLSHOI

This category offers 60 sq ft (5.57 m²) of space. It has two beds, with the upper measuring 31.5 x 68.5 in. (80 x 174 cm) and the lower measuring 43.3 x 72.4 in. (110 x 184 cm). This compartment also offers comfortable seating, a table and a small wardrobe. The Bolshoi category has its own lavatory equipped with toilet, washing basin, and integrated shower with shower curtain. This category has only six compartments per car.



BOLSHOI PLATINUM

The Bolshoi Platinum compartment provides almost 77 sq ft (7.15 m²) of space, even more than the Bolshoi compartment. The lower bed measures ca. 47.2 x 72.4 in. (120 x 184 cm), the upper measures ca. 32.3 x 68.5 in. (82 x 174 cm). Each compartment has a spacious wardrobe and its own lavatory outfitted with a separate shower cabin. This category, offering the highest level of comfort available on the Trans-Siberian Railway, contains only five compartments per car for a maximum of just 10 guests.



FURTHER JOURNEYS IN OUR TRAIN COLLECTION

Orient Silk Road Express—The Legendary Silk Road

Persian Explorer in Iran

African Explorer—Southern Africa by Private Train

Rovos Rail—Epic Journey through Africa

The Royal Al Andalus—Portugal and Spain

Continental Classic Express—Southeast-Europe

UNIQUE RIVER JOURNEYS IN OUR CRUISE COLLECTION

Majestic Mekong—Cruises in Laos and Thailand

Magical Myanmar—Cruises on the Irrawaddy

Amazing Amazon—River Cruises through Brazil

Russia's Magnificent Rivers—Volga, Lena and Yenisei

European Waterways—Portugal, Sweden and Scotland

